

# i•trezzo



## EMERGENCY PREPAREDNESS SOFTWARE (EPS)



Mandatory Browser Channel

November 9, 2007

**itrezzo, Inc.**

info@itrezzo.com

<http://www.itrezzo.com>

1-408-540-5020

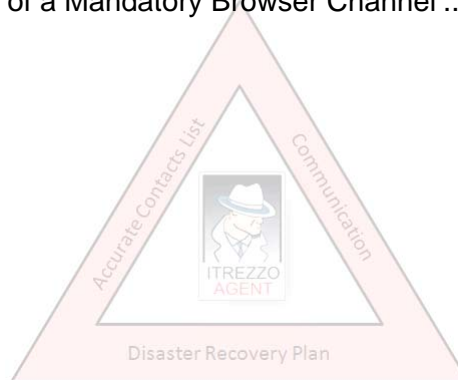
## Abstract

This document will demonstrate the correct method of configuring Mandatory Browser Channel for the itrezzo server.

The premise of this document is to show that the itrezzoAgent Mandatory Browser Push is easily configured and is a proven method of enhancing distribution of critical Disaster Recovery Planning (DRP) and Business Continuity Planning (BCP) documents.

## Table of Contents

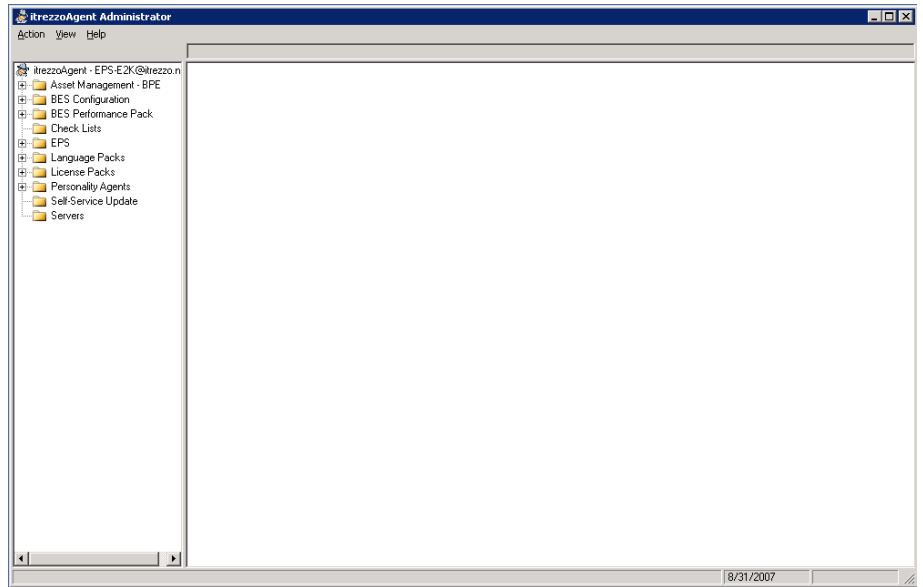
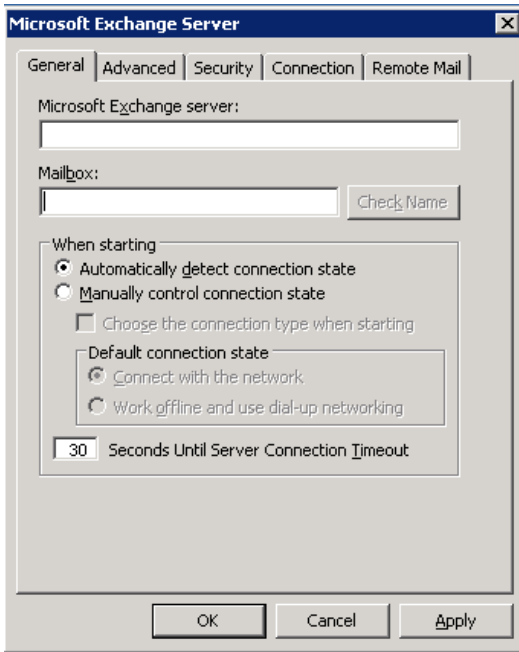
<b>1.0 itrezzoAgent Server Configuration .....</b>	<b>3</b>
1.1 Activity 1: Creation of a Mandatory Browser Channel .....	3



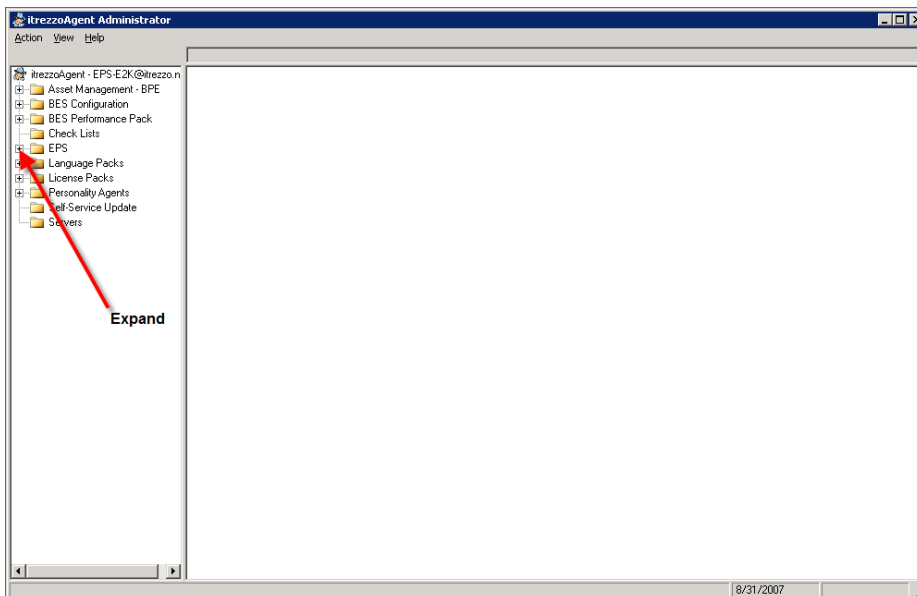
# 1.0 itrezzoAgent Server Configuration

## 1.1 Activity 1: Creation of a Mandatory Browser Channel

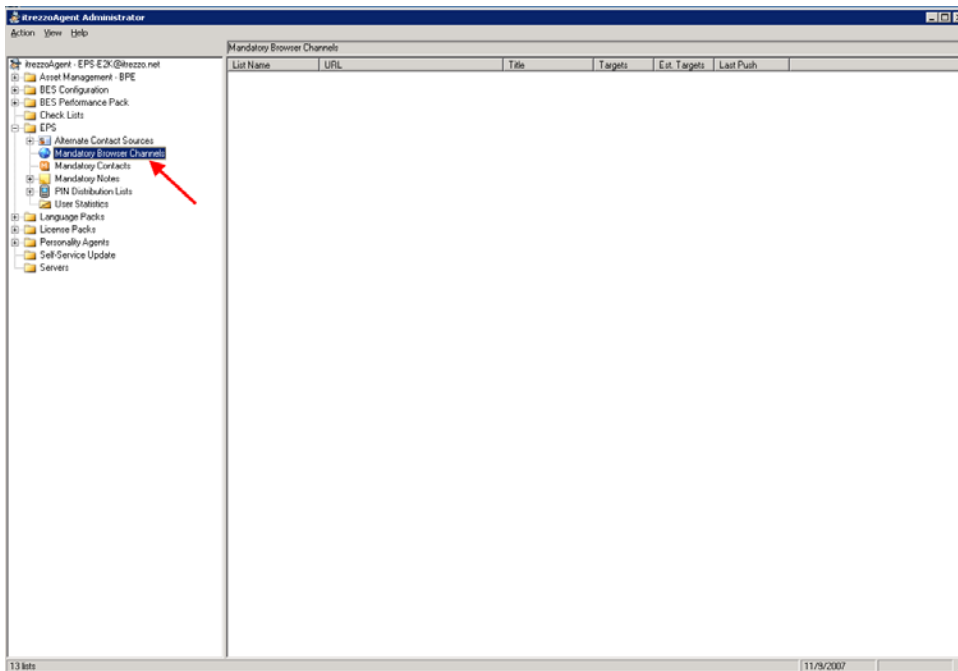
A. Log onto the itrezzo Administrator with your credentials



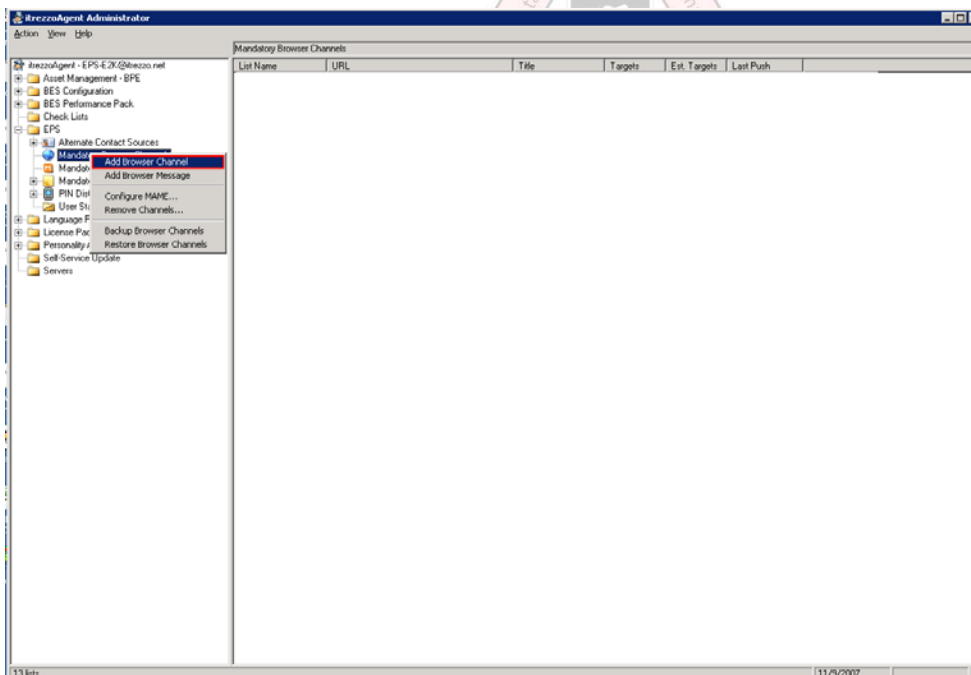
B. Expand the EPS Folder



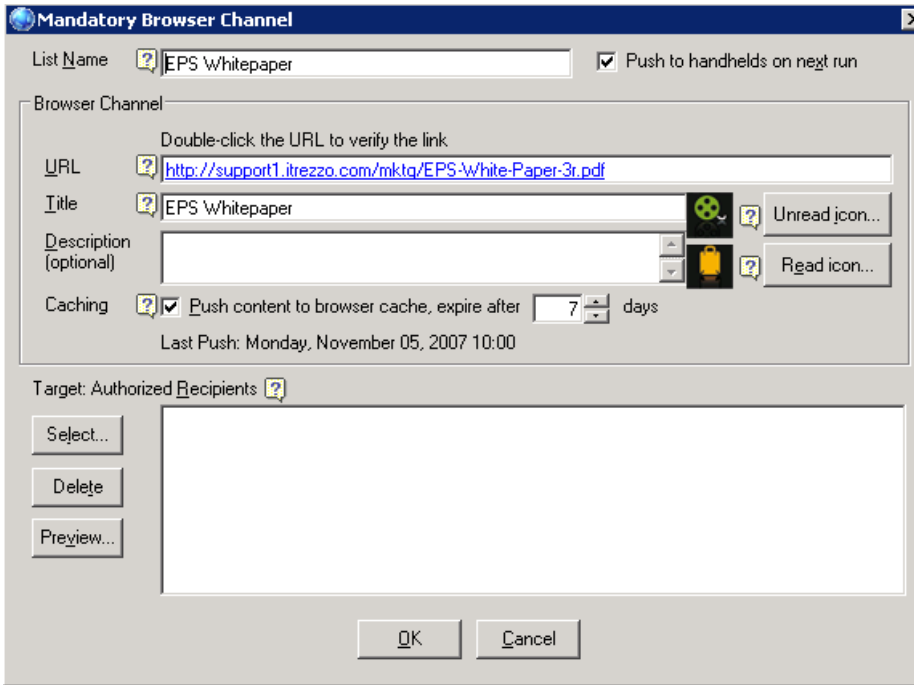
C. Select Mandatory Browser Channel from the dropdown menu



D. Right-Click Mandatory Browser Channel and **Add Browser Channel**

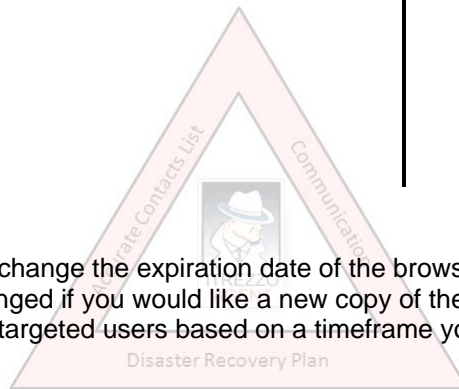


E. Add the following information and then select **OK**:

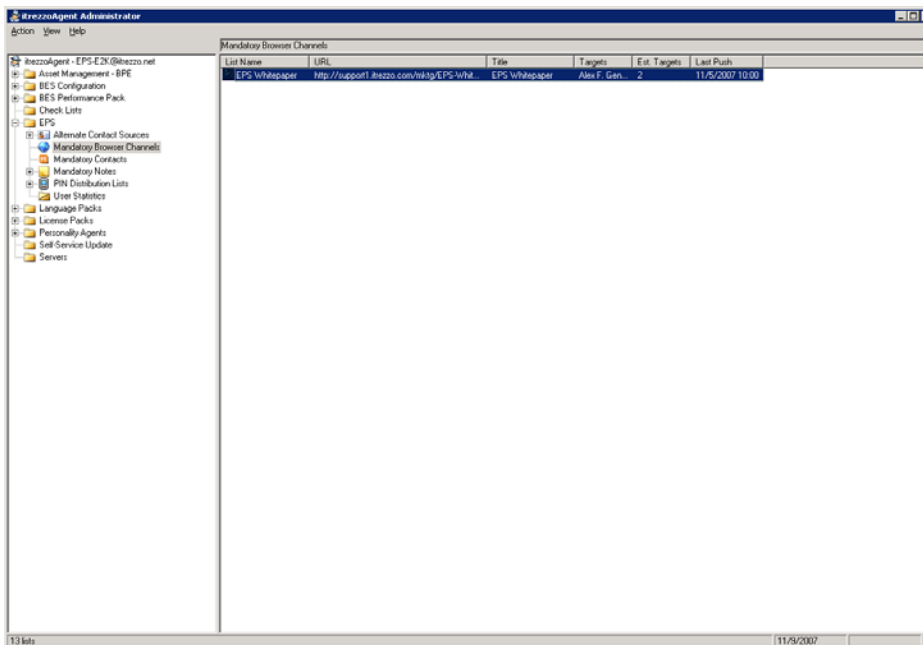


- ← List Name (What you would like to call this contact list)
- ← The URL of the document should be placed here. It is important to note that you should have a URL which contains a legitimate address which may be reached via the web. A common mistake would be to place:  
C://servername/document.doc
- ← Click the **Unread icon** button and **Read icon** button to pick PNG files which will present themselves on your Blackberry
- ← Create a **Title** for this Mandatory Browser Channel
- ← Click the **Select** button under **Target: Authorized Recipients** to pick contacts or distribution lists from the available address lists who will receive the Mandatory Browser Channel.

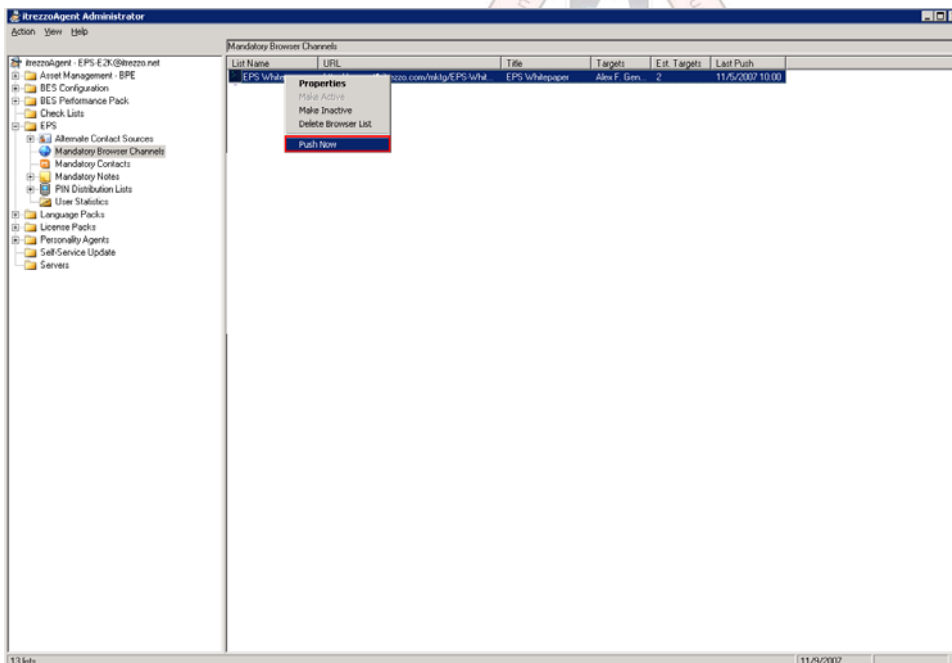
- a. You may also change the expiration date of the browser cache from this window. This should be changed if you would like a new copy of the document you are pushing to be sent to the targeted users based on a timeframe you specify.



F. Hit the **F5** key to refresh the Mandatory Browser Push window

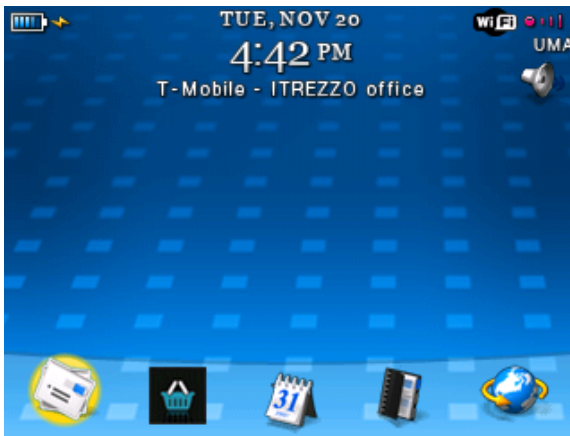


G. To test your Mandatory Browser Channel Right-Click on the channel you had just created and select **Push Now** .:



The Mandatory Browser Channel can then be viewed on the Blackberry either on the Ribbon or in some cases the application folder. If it has not populated immediately on your screen, you may also see the document was pushed via the Blackberry Browser by viewing your **Browser Channels**.

H. View the Mandatory Browser Channel on your Blackberry



I. Open the document by clicking on the Agent



J. You may now view the document on your Blackberry



K. The agent image has now changed to a “read” status.



The document which is being viewed is an actual representation of how it will be read on the Blackberry. These images were procured directly off of a Blackberry device using a cmd line utility, which when connected by USB to the Blackberry, offers the ability to capture whatever image is on the Blackberry screen.

